



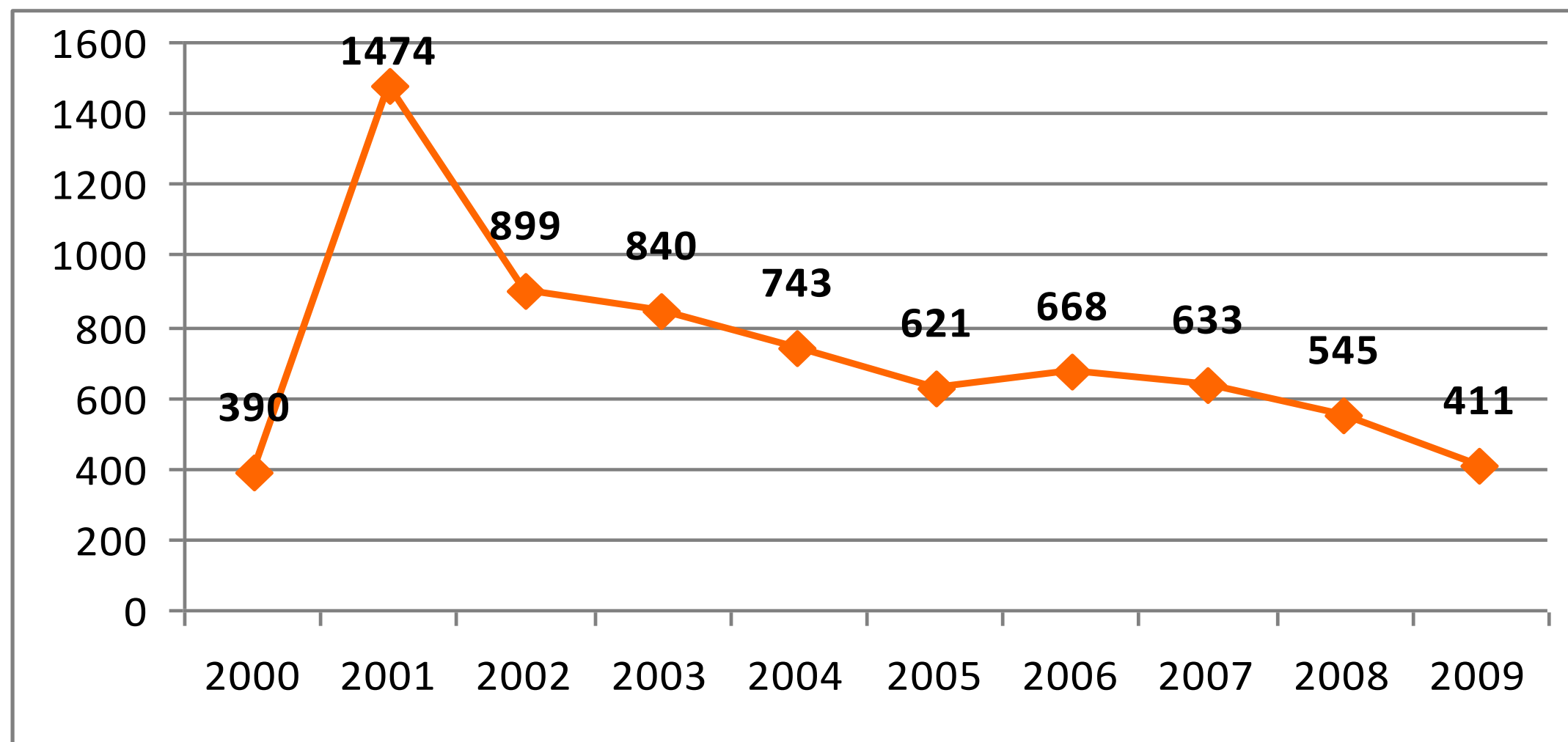
# HIV EPIDEMIC AND ACTIVITIES RELATED TO NIHD

**Aire Trummal**

chief analyst, department of surveillance and evaluation

Visit of the Dutch Association of Social Medicine,  
03.06.2010, NIHD

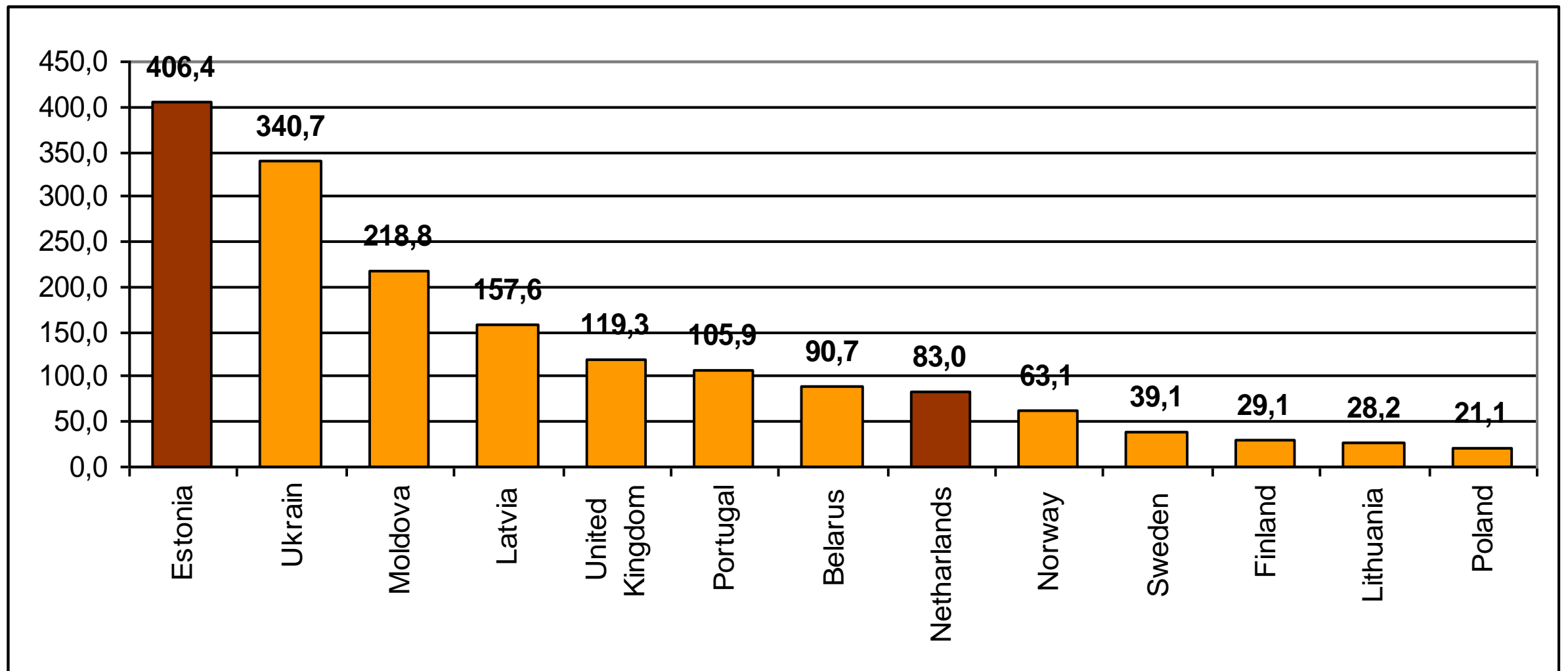
## Registered HIV cases



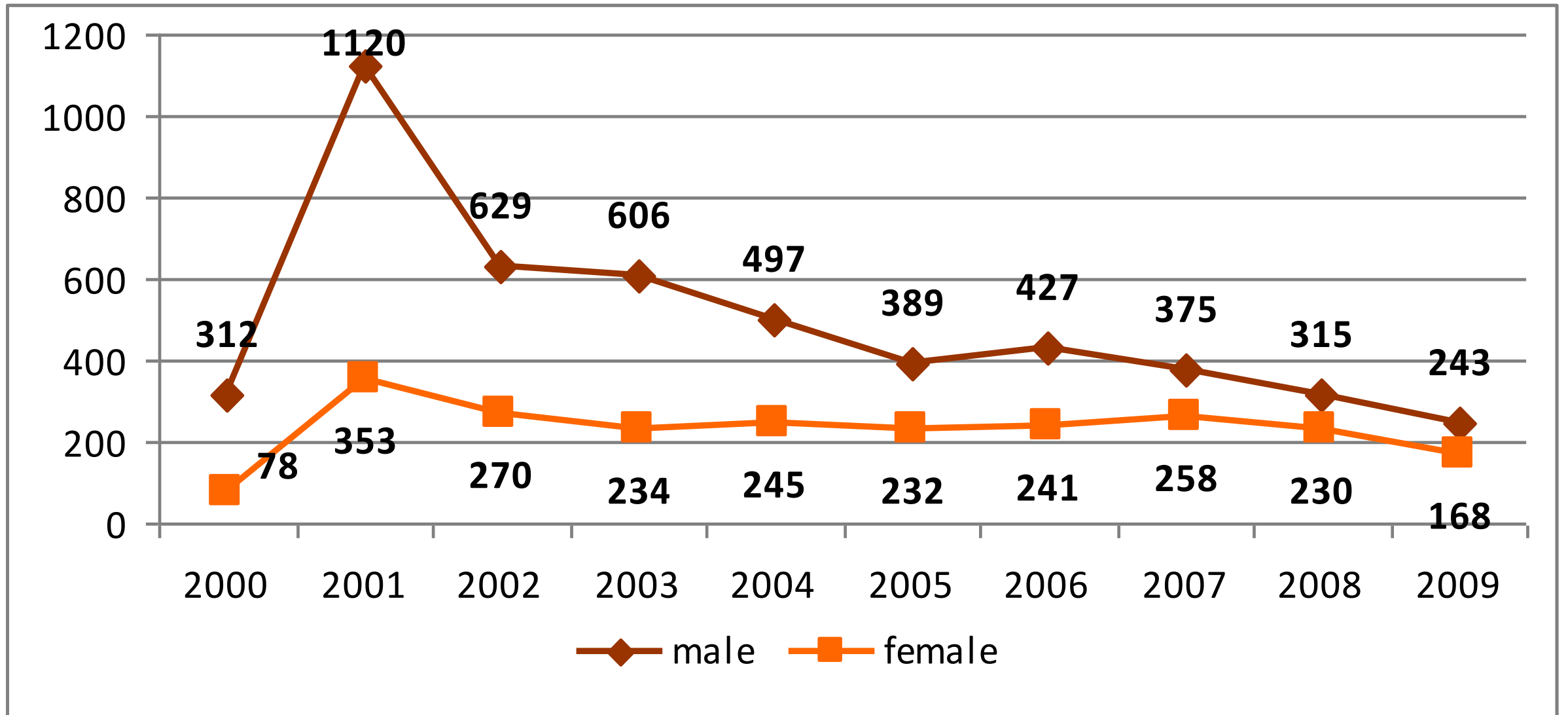
- From 1988-1999 in total 96 HIV cases.
- Big increase from the second half of 2000.
- Concentrated epidemic among IDUs.
- In total 7,488 registered HIV cases (05.2010) and 295 AIDS cases.
- Main regions: East-Estonia, Tallinn (83% of all cases).

# New HIV cases per 1 mln population in 2008

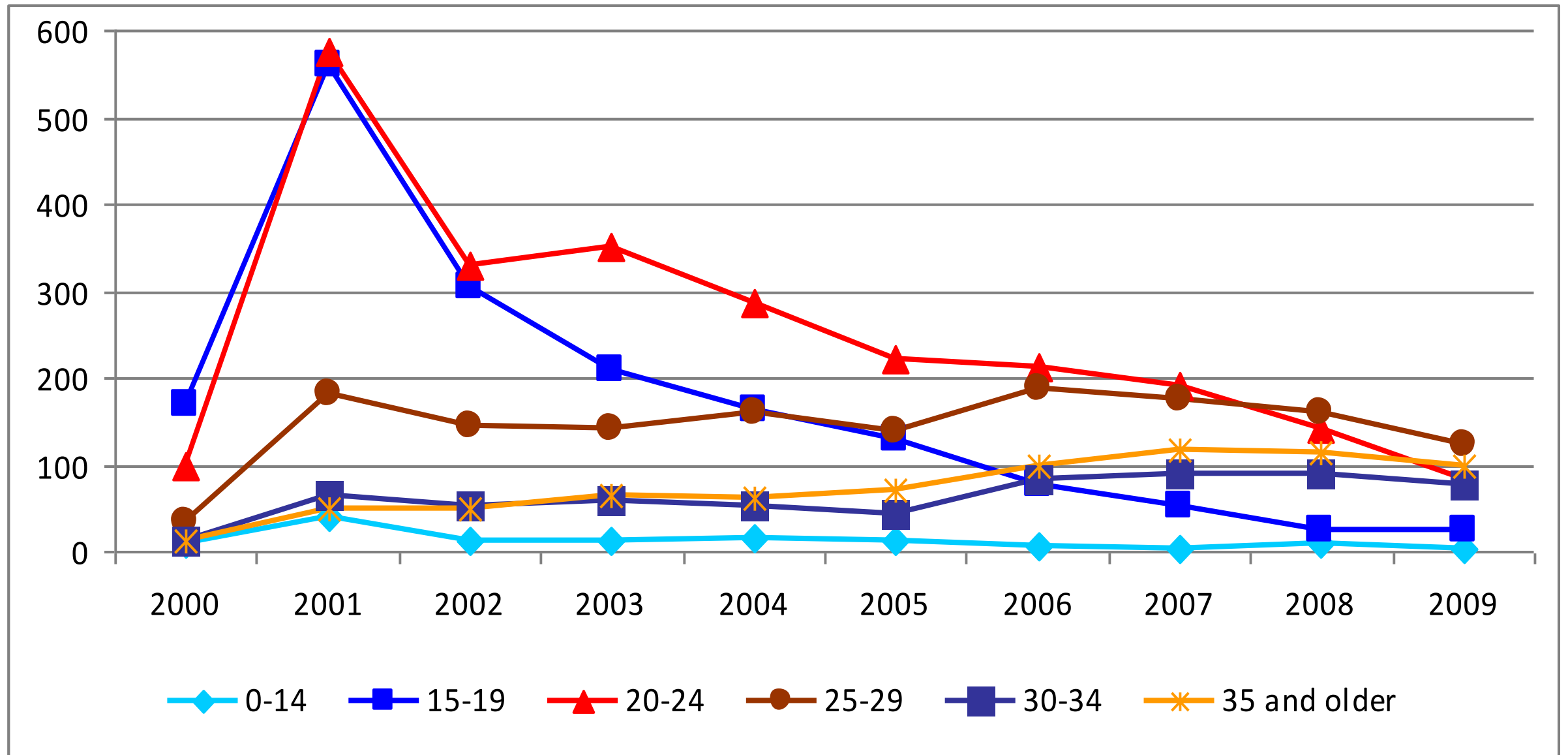
## Selected European countries



## New HIV cases by gender



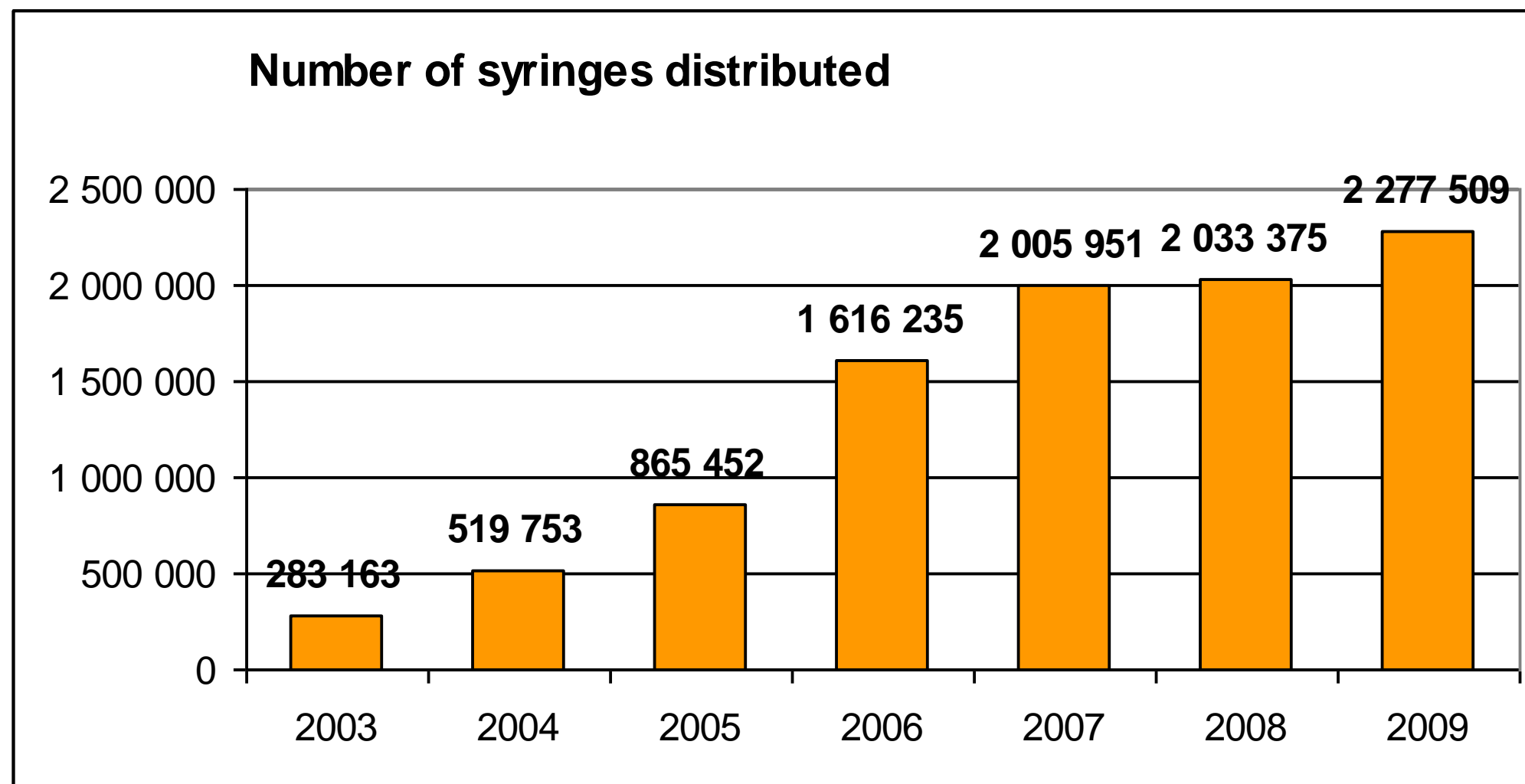
# New HIV cases by age groups



## INJECTING DRUG USERS, Study 2007

INDICATOR	Tallinn	Kohtla-Järve
HIV-prevalence	48%	59%
Do not chare syringes/needles, last 4 weeks	82%	94%
Do not chare injecting equipment, last 4 weeks	65%	79%
Always use a condom, last 4 weeks	37%	55%
Visited syringe exchange, last 4 weeks	64%	75%
Syringe exchange as the main source for syringes, last 4 weeks	48%	65%

## INJECTING DRUG USERS, Syringe exchange sites



- 9 organisations, 36 syringe exchange sites.
- No of visits: from 23,600 in 2003 to 179,200 in 2009.
- Estimated population size: 13,800 IDUs.

## Activitises financed through NIHD (1)

### **OTHER SERVICES FOR INJECTING DRUG USERS**

- Methadone treatment (5 org., 7 sites), 660 in treatment (12.2009)
- Low threshold centers (4 org.)
- STI diagnostics for IDUs and sex partners (2 org.)

### **SERVICES FOR SEX WORKERS**

- STI diagnostics (1 org.)
- Counselling (1 org.)

### **SERVICES FOR PEOPLE LIVING WITH HIV**

- Support services (6 org.)
- Case management (3 hospitals)



## Activities financed through NIHD (2)

### YOUNG PEOPLE AND GENERAL POPULATION

- Media campaigns, public events, website [www.hiv.ee](http://www.hiv.ee)
- Giving out guiding materials and training teachers
- Youth Counselling Cabinet services for uninsured youth

### AIDS COUNSELLING CABINETS

- 8 cabinets
- About 5% of all tests made in Estonia
- Up to 50% of all registered new HIV cases

### SURVEILLANCE AND EVALUATION

- Regular studies among main target groups (youth, IDUs, SWs, MSM, prisoners, PLWHA)
- Questioning clients of syringe exchange and testing services
- Data collection on service provision

**Capacity building** of the service providers.

## National HIV and AIDS Strategy 2006-2015

### Related ministries

- **Ministry of Social Affairs**: coordinating the implementation, different prevention and health care services (mainly through NIHD).
- **Ministry of Justice**: services in prison settings.
- **Ministry of Education and Research**: prevention among youth.
- **Ministry of Defence**: prevention among conscripts.
- **Ministry of Interior**: education for police and rescue forces, services in arrest houses.
  
- Implementation is overseen by the **HIV/AIDS Committee of the Government of the Republic**.



**THANK YOU!**